



### Aberdeen Annual Trend

May 2017

01/05/2017 to 28/05/2017



REGION - Scotland

Monday to Sunday

COUNT TYPE: Footfall Counts

#### Monthly Footfall

Benchmark calculations (Year on Year and Month on Month) have been calculated using like for like data sets (only those counters available in both comparison periods) to ensure statistical accuracy

	Year to Date % Change		Year on Year % Change		Month on Month % Change	
	2017	2016	2017	2016	2017	2016
Aberdeen Annual Trend	▼ -4.2 %	▼ -1.9 %	▼ -2.4 %	▲ 0.1 %	▲ 1.6 %	▲ 0.4 %
Scotland	▲ 0.3 %	▼ -0.8 %	▲ 0.3 %	▲ 3.4 %	▲ 4.0 %	▲ 6.5 %
UK	▲ 0.5 %	▼ -2.0 %	▼ -2.1 %	▲ 1.5 %	▼ -1.0 %	▲ 3.1 %

#### Headlines

Footfall for the year to date is 4.2% down on the previous year.

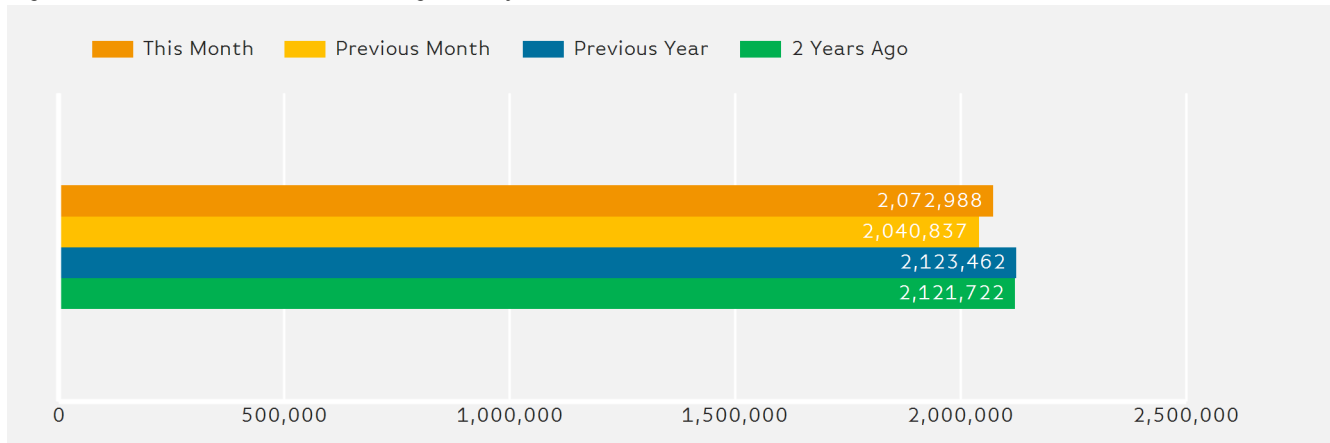
The number of visitors counted for month commencing 1 May 2017 was 2,072,988.

The busiest day in month commencing 1 May 2017 was Thursday 25 May with 113,974 visitors.

The peak hour of the month was 19:00 on Thursday with footfall of 9,428

#### Footfall Totals by Month

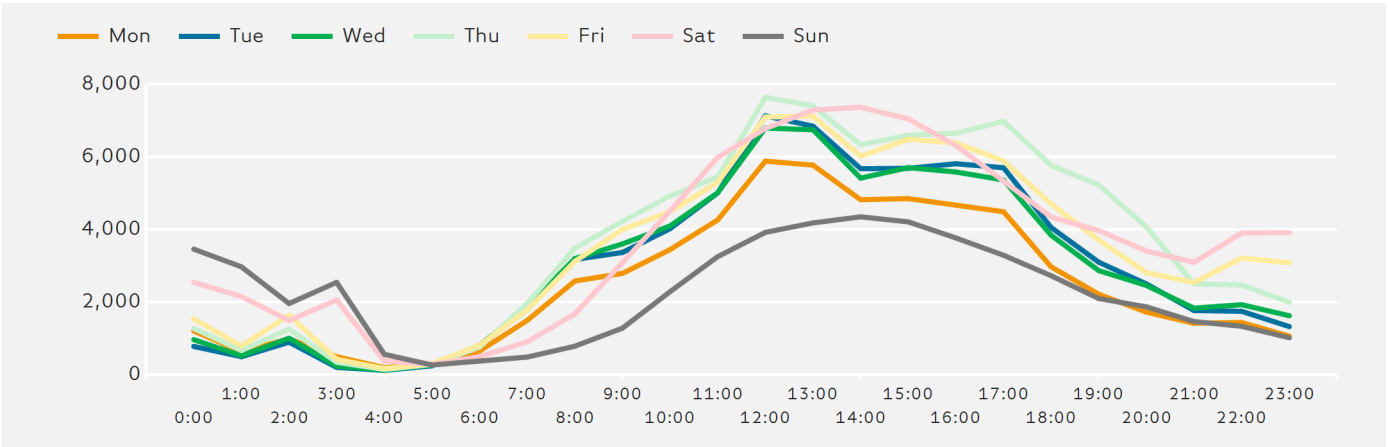
Figures shown below are calculated using monthly totals.



Springboard follows the BRC calendar consisting of complete weeks (Sun- Sat or Mon-Sun) to ensure that the same day is comparable each week. Each month is compiled from a set of full weeks which results in a calendar of a 4 week month, 4 week month, 5 week month pattern.

### Footfall by Hour

The figures shown below are calculated using a weekly average



### Weather



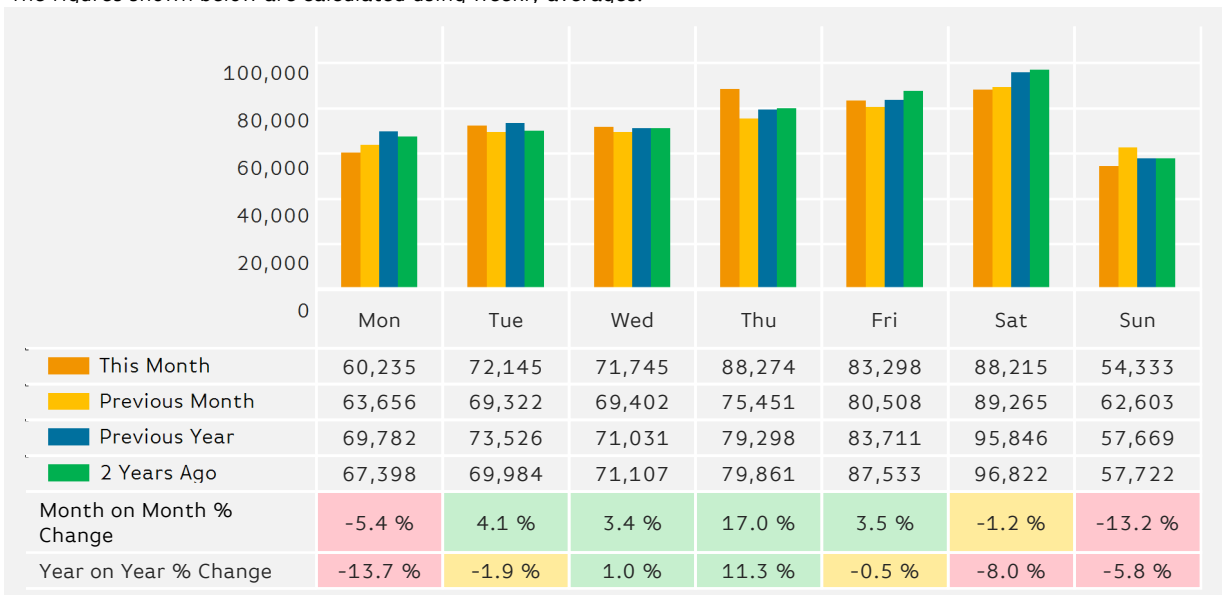
Number of days this month	10	12	6
Number of days same month last year	15	13	

### Average Temperature

Average Temperatures	Maximum Temperature	Minimum Temperature
2017	13.9	7.3
2016	14.0	6.4

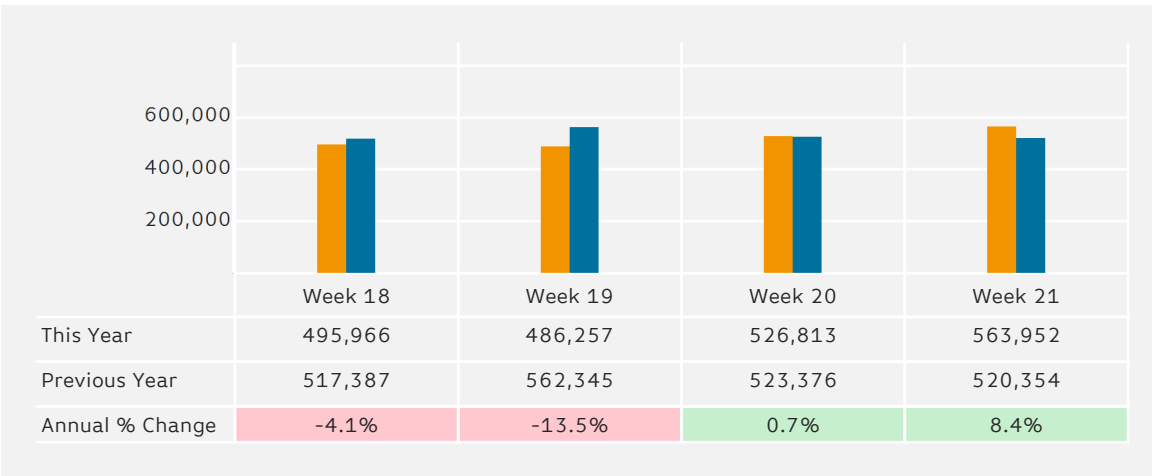
### Footfall by Day

The figures shown below are calculated using weekly averages.



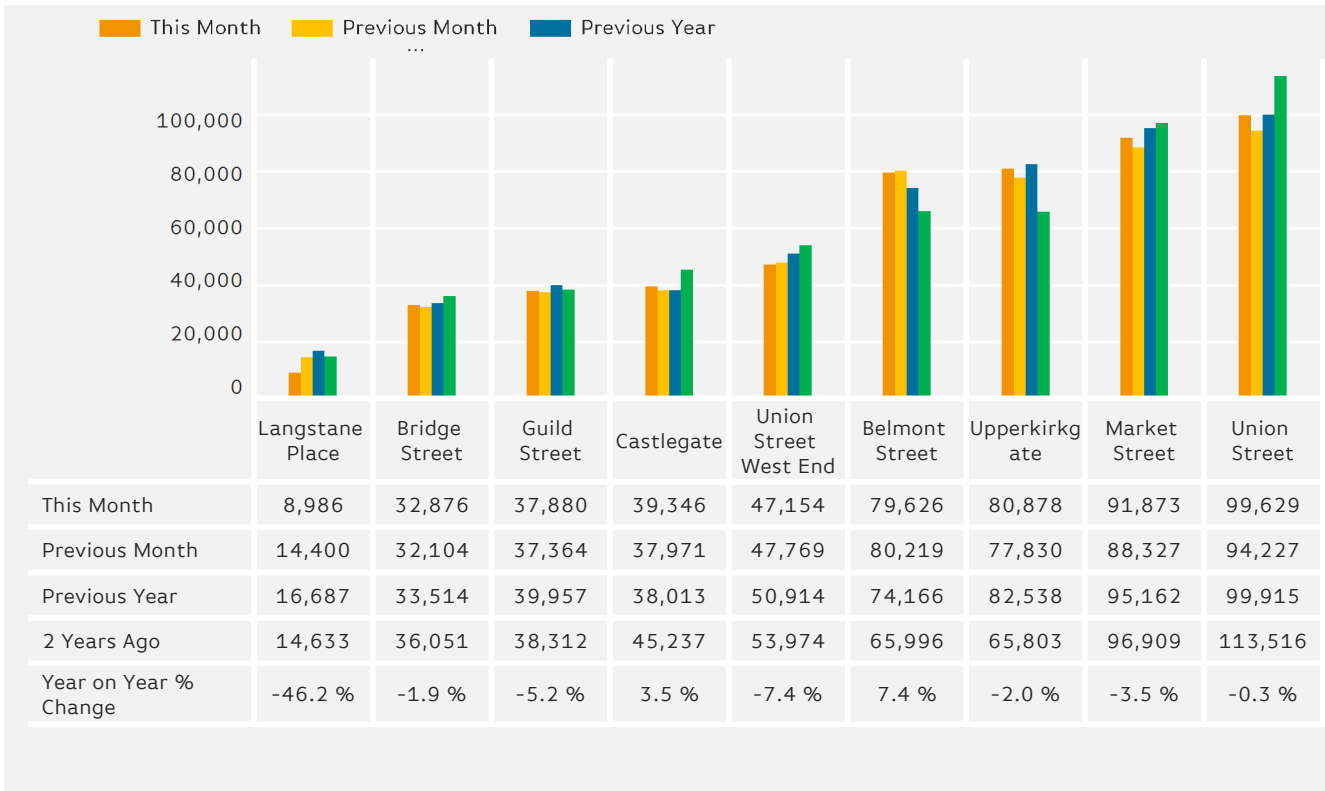
### Footfall by Week of Month

The figures shown below are calculated using weekly totals.



### Footfall Totals

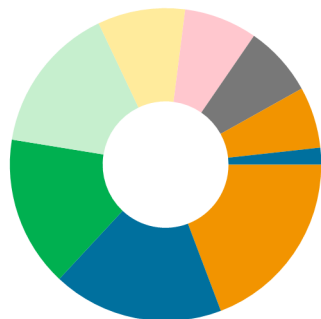
The figures shown below are calculated using weekly averages.



### Footfall Totals

Counting By Location - Main Locations Only

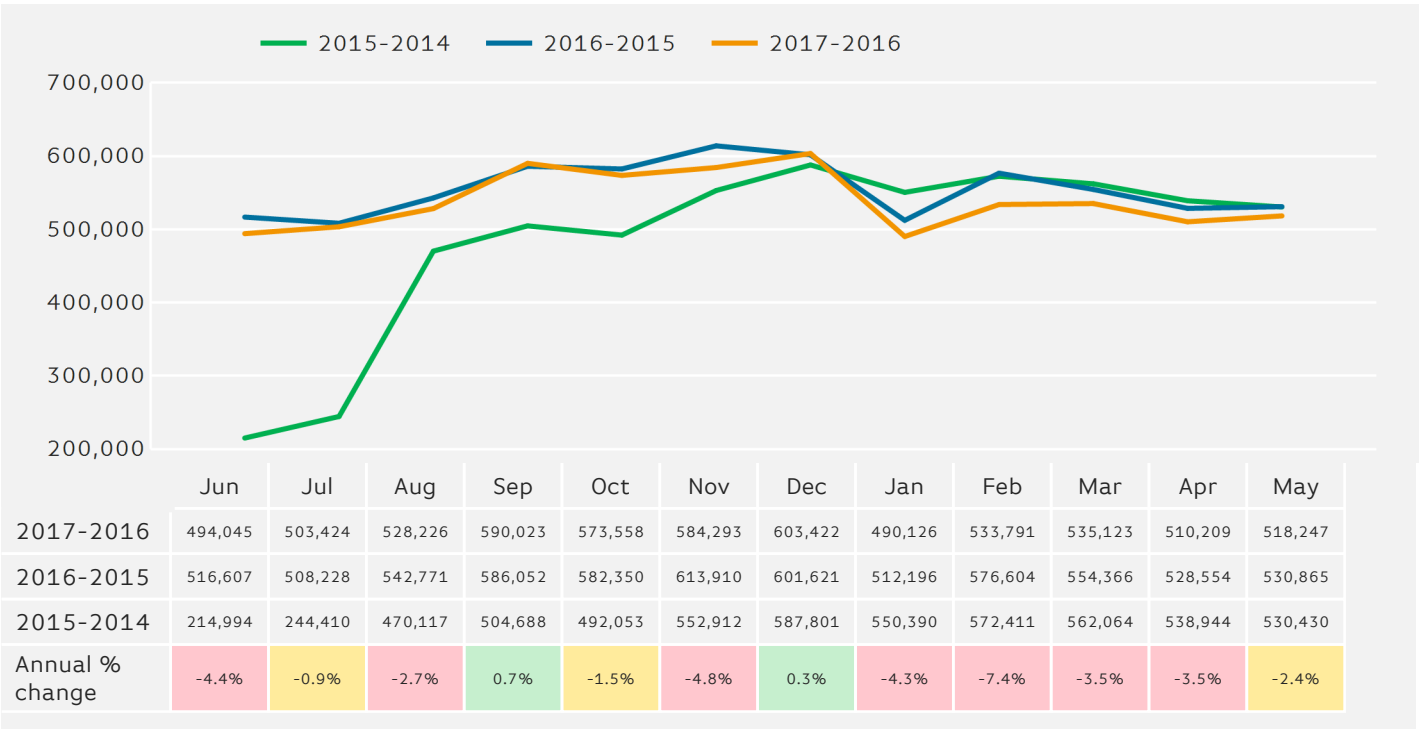
The figures shown below are based on weekly averages



- Union Street, 19.2 %
- Market Street, 17.7 %
- Upperkirkgate, 15.6 %
- Belmont Street, 15.4 %
- Union Street West End, 9.1 %
- Castlegate, 7.6 %
- Guild Street, 7.3 %
- Bridge Street, 6.3 %
- Langstane Place, 1.7 %

**Footfall - Rolling 12 Months**

The figures shown below are calculated using weekly averages.



Year to Date % Change is the annual % change in footfall from January of this year compared to the same period last year.  
 Year on Year % Change is the % change in footfall for this week compared to the same week in the previous year.  
 Week on Week % Change is the % change in footfall for this week from the previous week.